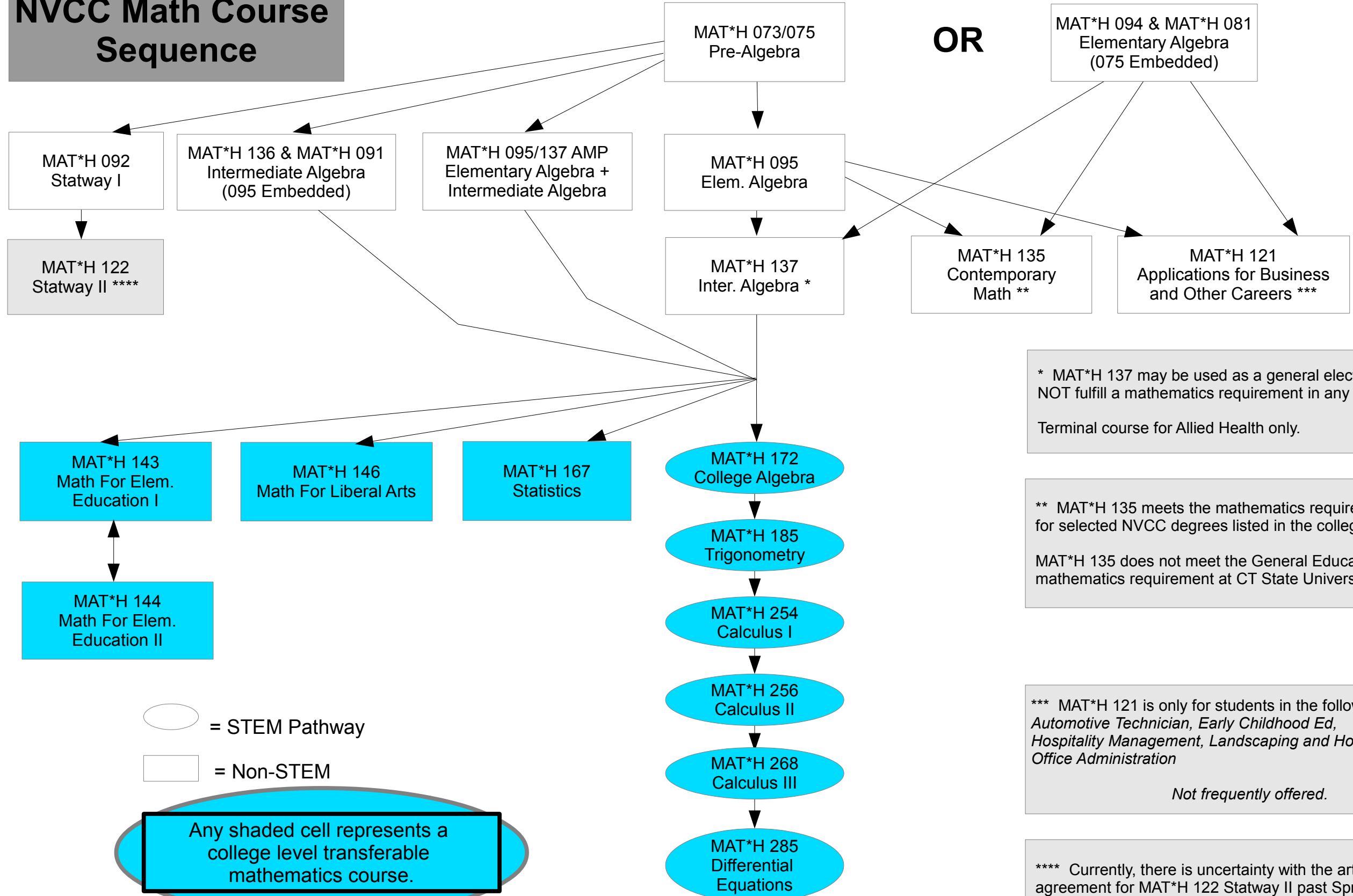


# NVCC Math Course Sequence



OR

\* MAT\*H 137 may be used as a general elective, but will NOT fulfill a mathematics requirement in any degree.  
Terminal course for Allied Health only.

\*\* MAT\*H 135 meets the mathematics requirement for selected NVCC degrees listed in the college catalog.  
MAT\*H 135 does not meet the General Education mathematics requirement at CT State Universities.

\*\*\* MAT\*H 121 is only for students in the following programs: *Automotive Technician, Early Childhood Ed, Hospitality Management, Landscaping and Horticulture, Office Administration*  
*Not frequently offered.*

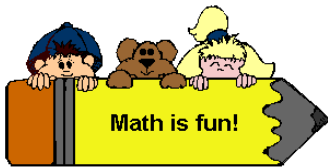
\*\*\*\* Currently, there is uncertainty with the articulation agreement for MAT\*H 122 Statway II past Spring 2014.

○ = STEM Pathway  
□ = Non-STEM

Any shaded cell represents a college level transferable mathematics course.

# Can't decide which college level, **TRANSFERABLE** math course to take?

Math 137 is the Prerequisite for all courses listed



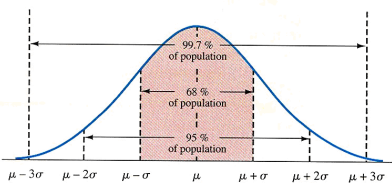
## **MAT\*143/144** *Math for Elementary Education*

- Plan to teach elementary or middle school?
- Need to prepare for Praxis?
- Want to stay on top of your child's math education?



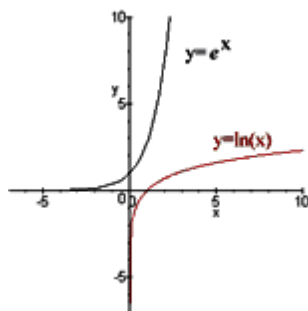
## **MAT\*146** *Math for the Liberal Arts*

- Looking for the *best* course for a liberal arts or general studies transfer student?
- Want to explore a broad range of topics in mathematics *useful* in today's society?



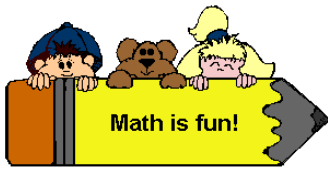
## **MAT\*167** *Principles of Statistics*

- Majoring in human services, or just looking for a practical math course?
- Curious to learn about collecting, analyzing, interpreting, and making predictions about the data around us?



## **MAT\*172** *College Algebra*

- Are you a math, science, engineering or technology major, or majoring in business?
- Did well in intermediate algebra and want to take an *extensively algebra-based* course?
- Planning on taking trigonometry and calculus?



## MAT\*143/144 Math for Elementary Education

### Course Recommended For:

- Early Childhood Education
- Anyone planning to major in Elementary Education



## MAT\*146 Math for the Liberal Arts

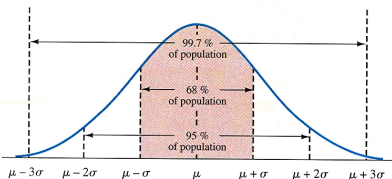
- General Studies (not continuing in Science, Technology, Engineering, or Mathematics)
- Legal Assistant
- Digital Arts Tech
- Visual & Performing Arts
- Liberal Arts & Sciences (not continuing in Science, Technology, Engineering, or Mathematics)



## MAT\*167 Principles of Statistics

**\*\*Math 122 Statway II  
may be substituted with  
Division Director  
approval\*\***

- Human Services
- Behavioral Science
- Business Administration
- Business Finance
- Business Management
- Hospitality Management
- Marketing
- DARC
- Accounting
- Criminal Justice (EXCEPT Forensics)



## MAT\*172 College Algebra

- Aviation Science
- Criminal Justice-Forensics
- Computer-Aided Eng Tech
- Computer Info Systems Tech
- Fire Tech & Administration
- Electronic Engineering Tech
- Engineering Tech
- Environmental Science
- Manufacturing Eng Tech
- Mathematics & Science
- Mechanical Engineering Tech

