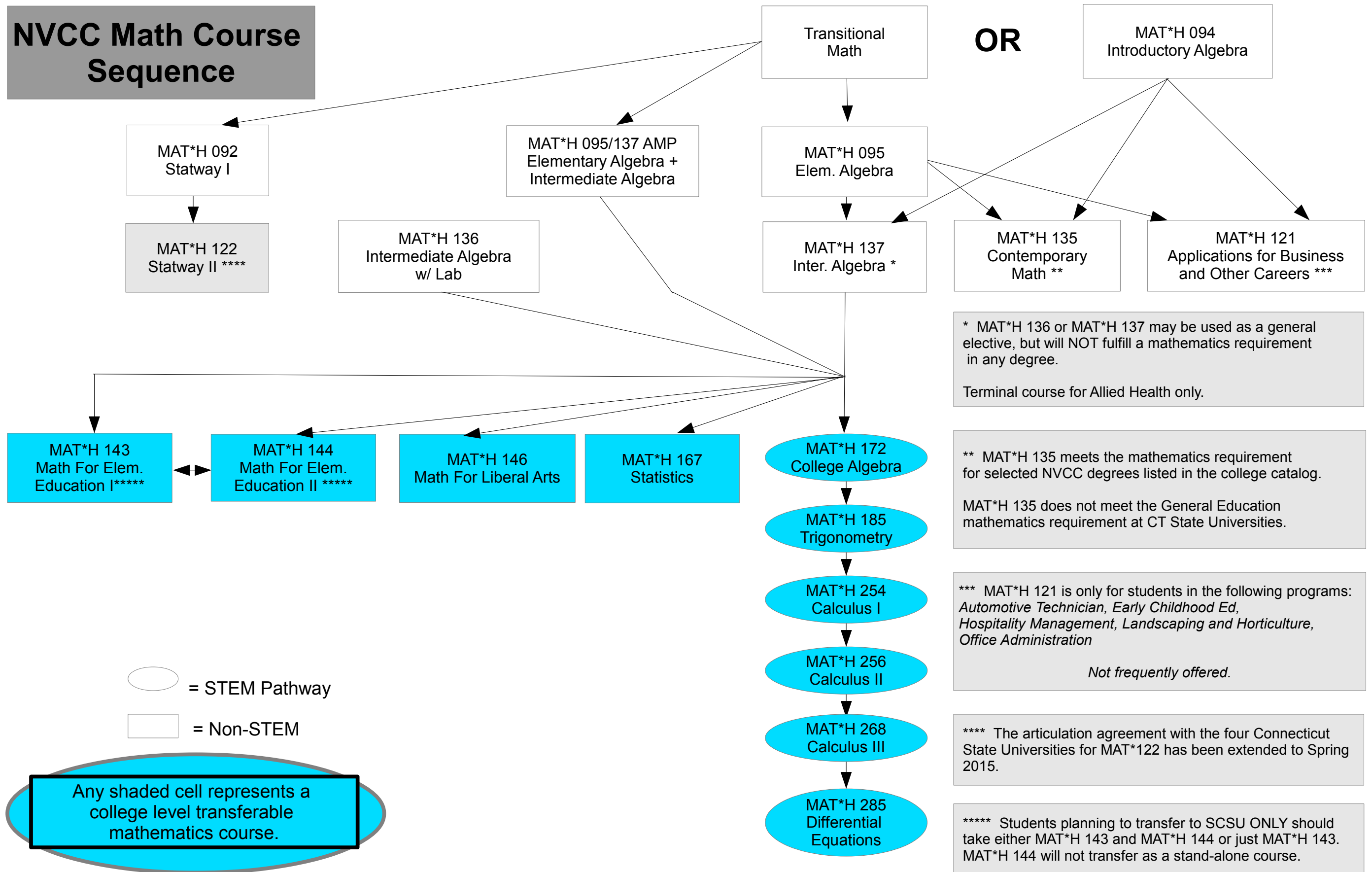


NVCC Math Course Sequence



* MAT*H 136 or MAT*H 137 may be used as a general elective, but will NOT fulfill a mathematics requirement in any degree.
Terminal course for Allied Health only.

** MAT*H 135 meets the mathematics requirement for selected NVCC degrees listed in the college catalog.
MAT*H 135 does not meet the General Education mathematics requirement at CT State Universities.

*** MAT*H 121 is only for students in the following programs: *Automotive Technician, Early Childhood Ed, Hospitality Management, Landscaping and Horticulture, Office Administration*
Not frequently offered.

**** The articulation agreement with the four Connecticut State Universities for MAT*122 has been extended to Spring 2015.

***** Students planning to transfer to SCSU ONLY should take either MAT*H 143 and MAT*H 144 or just MAT*H 143. MAT*H 144 will not transfer as a stand-alone course.

○ = STEM Pathway
□ = Non-STEM

Any shaded cell represents a college level transferable mathematics course.