



# LAB: The Heart

*Structural Review*  
*Pig Heart Identifications*

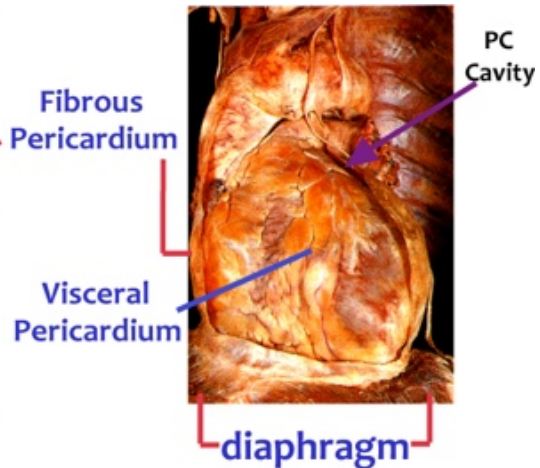
**Dr. Lawrence G. Altman**  
[www.lawrencegaltman.com](http://www.lawrencegaltman.com)  
*Some illustrations are courtesy of McGraw-Hill.*

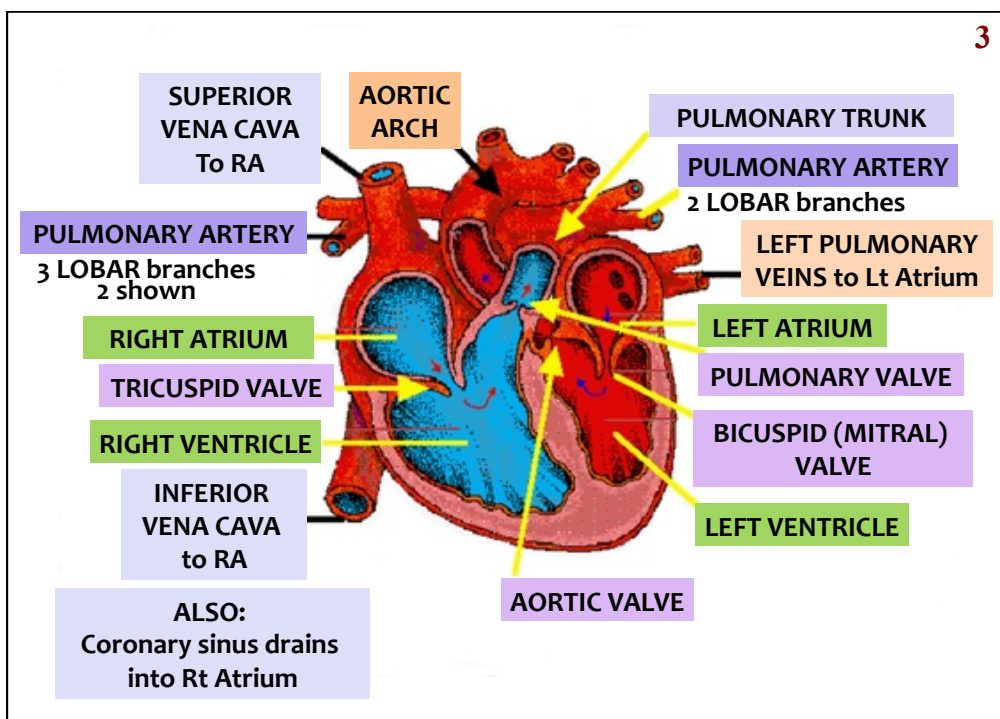


**Fibrous pericardium  
firmly attached to  
the diaphragm**

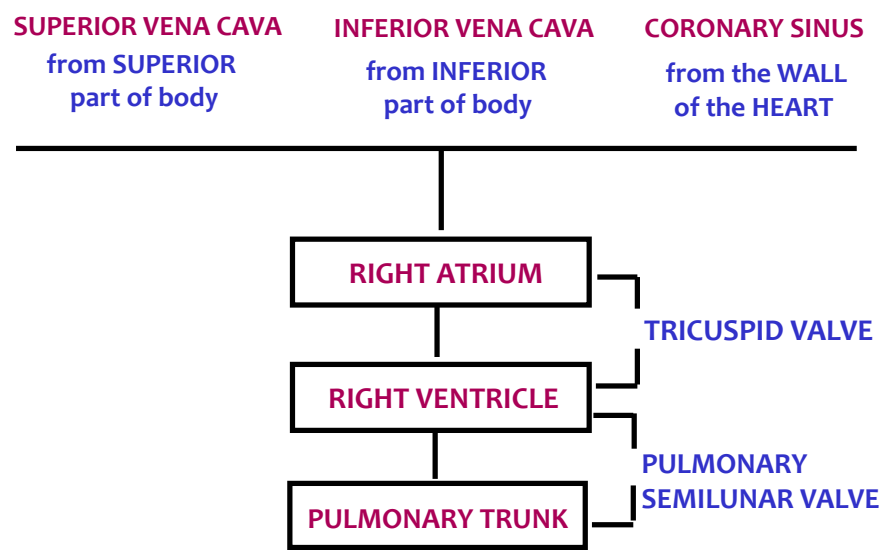


**Fibrous pericardium  
reflected:  
visceral pericardium**



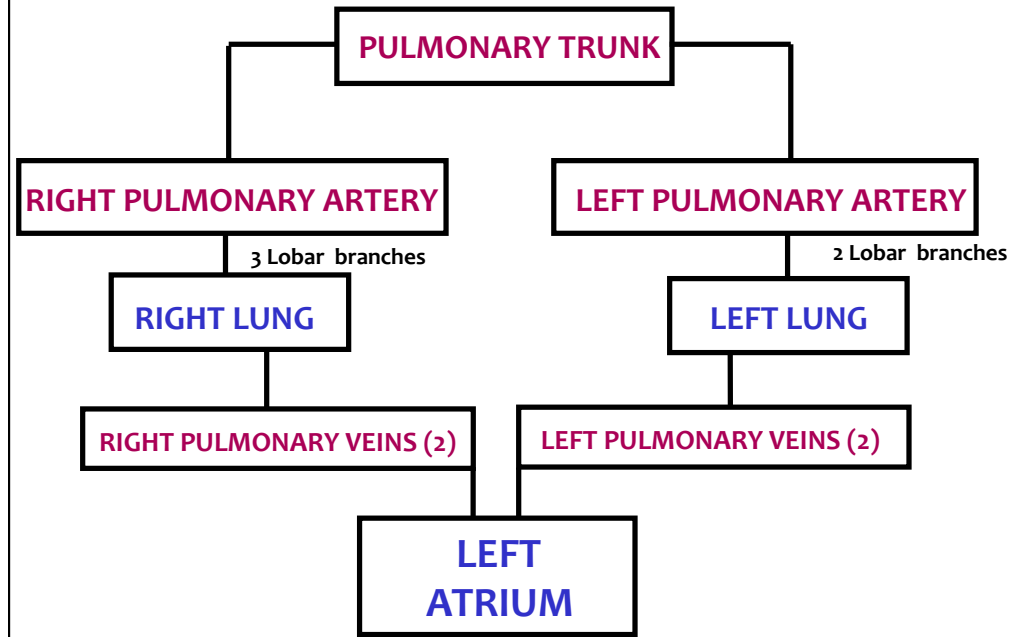


## BLOOD FLOW THROUGH THE HEART



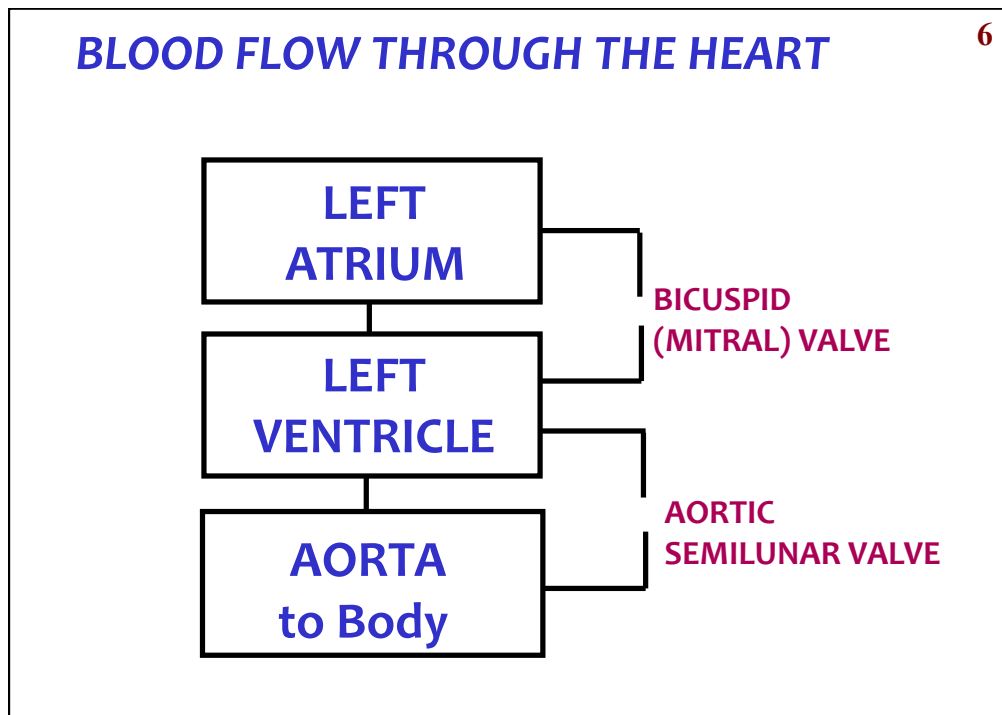
## BLOOD FLOW THROUGH THE HEART

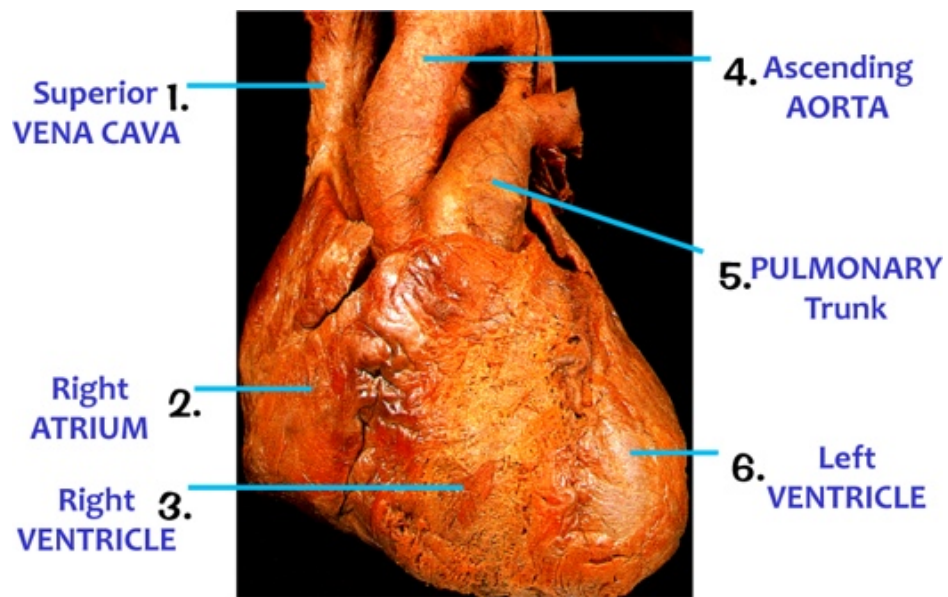
5



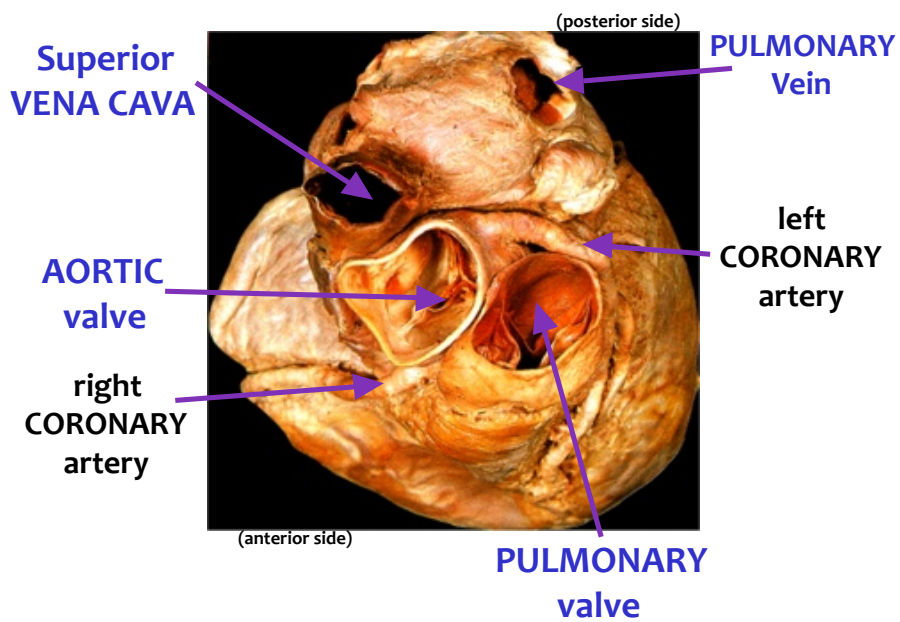
## BLOOD FLOW THROUGH THE HEART

6





Superior View



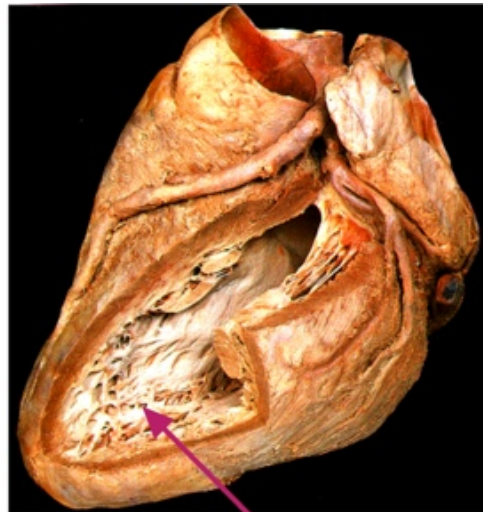
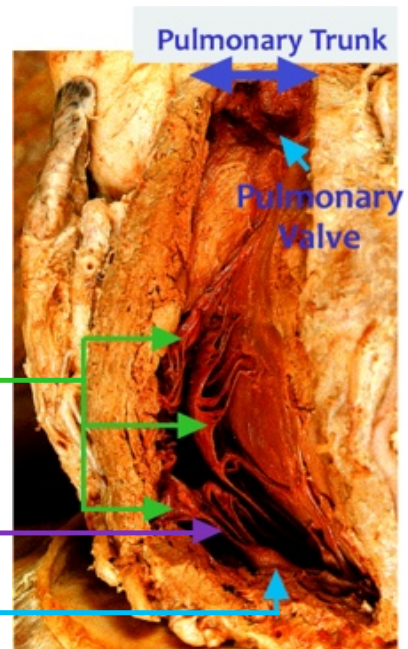
## Right VENTRICLE

(Anterior Wall removed)

CUSPS of the  
TRICUSPID VALVE 1.

CHORDAE TENDINEAE 2.

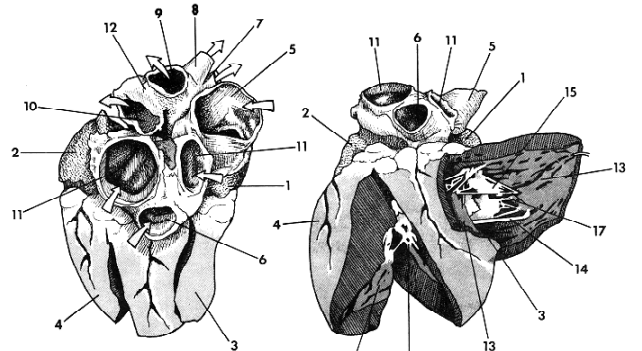
PAPILLARY MUSCLE 3.



**Trabeculae carneae**

Handout

PIG HEART, Posterior View



Also:

semilunar valves:

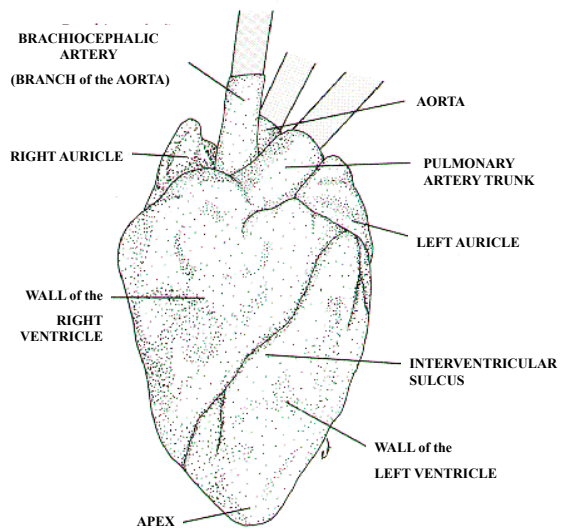
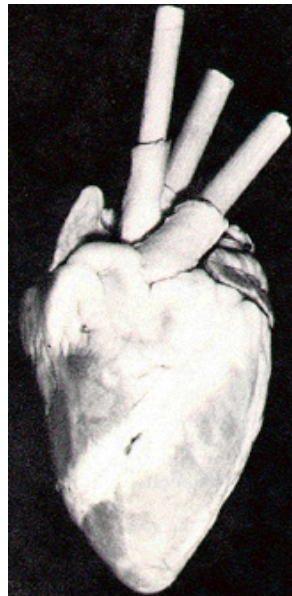
- AORTIC
- PULMONARY

Coronary arteries  
 (best on models)

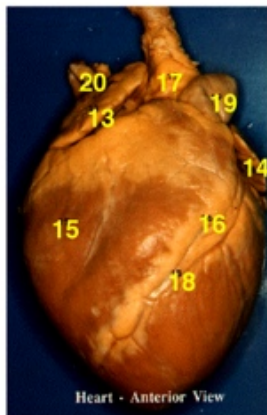
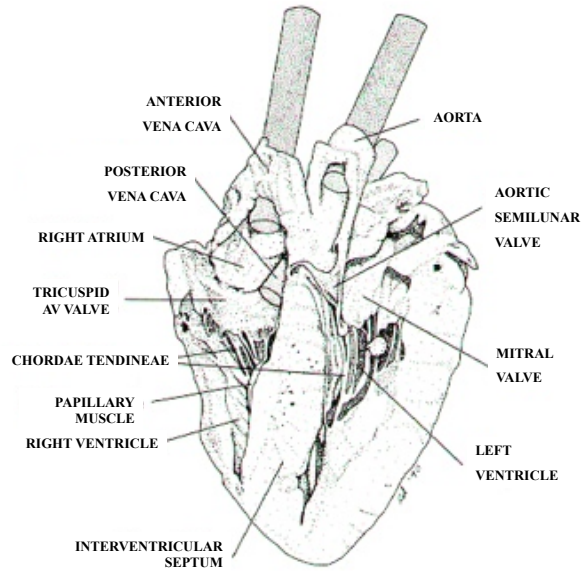
- |                      |                             |                                     |                         |
|----------------------|-----------------------------|-------------------------------------|-------------------------|
| • 1. Right auricle   | • 5. Superior vena cava     | • 9. Aorta to arteries              | • 13. Papillary muscles |
| • 2. Left auricle    | • 6. Inferior vena cava     | • 10. Pulmonary artery to lungs     | X 14. Moderator band    |
| • 3. Right ventricle | • 7. Innominate artery      | • 11. Pulmonary vein from lungs     | • 15. Tricuspid valve   |
| • 4. Left ventricle  | • 8. Left subclavian artery | X 12. Remnants of ductus arteriosus | • 16. Bicuspid valve    |
|                      |                             |                                     | • 17. Chordae tendineae |

**Note:**  
 Innominate (7) = brachiocephalic

• Know  
 X Skip







- 13. RIGHT ATRIUM
- 14. LEFT ATRIUM
- 15. RIGHT VENTRICLE
- 16. LEFT VENTRICLE
- 17. AORTA
- 18. LEFT CORONARY ART.
- 19. PULMONARY ARTERY
- 20. SUPERIOR VENA CAVA
- 21. AORTIC SEMILUNAR VALVE
- 22. PULMONARY SEMILUNAR VALVE
- 23. BICUSPID (MITRAL) VALVE
- 24. TRICUSPID VALVE
- 25. PAPILLARY MUSCLE
- 26. CHORDAE TENDINEAE
- 27. INTERVENTRICULAR SEPTUM

